

TeamQuest Alert

Multi-system monitor for event management with built-in performance evaluation

TeamQuest Alert is a system performance console that quickly highlights the health status of a large number of systems through performance monitoring and alarm event management. It automatically evaluates the performance of each of the monitored servers based on built-in rules of thumb, and then displays text and color indicators to show good and poor performance. Once a problem is detected, users can drill down to related performance information and user activity for rapid top-down analysis.

Alarm-based performance analysis

Establish alarms to proactively watch for dangerous trends in system performance.

Send an email, call a beeper, or send an SNMP trap to your management console.

View alarm counts by severity for groups of servers and specific alarms for individual servers.

Drill down to processes active at the time the alarm occurred to locate root causes for performance problems.

Investigate events and unusual situations before, during and after a performance problem occurs.

Chart alarm information to see how affected parameters tracked at the time an alarm occurred.

Rule-based performance analysis

Evaluate performance using built-in intelligence regarding normal and expected system behavior.

Reveal unusual system activity quickly and easily.

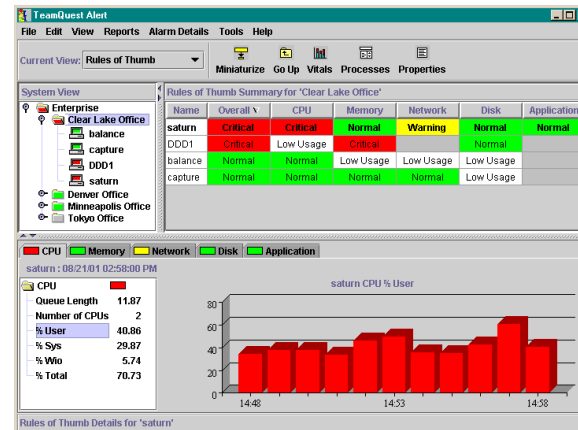
Detailed activity monitoring

Monitor system and application performance, including Oracle, SAP R/3, DB2 UDB, WebSphere and Web server.

View performance status with color and textual indicators.

Examine systems at appropriate levels of detail to see only information relevant to your analysis.

Drill down from high-level overview to detailed statistical charts and activity reports of active processes.



Rules of Thumb reports provide a quick status of system health. This report shows CPU on system "saturn" in the Clear Lake office is red, or critical.

Who uses it?

IT Operations
 Help Desk

For what?

Monitor servers proactively
 Automatically detect performance problems before users are affected.

Drill down to the root cause of performance problems.

Monitor all servers from one console

Know at a glance how servers are performing through color and text indicators.

Observe performance of heterogeneous servers.

Evaluate performance based on rules of thumb

Automatically evaluate system performance.

Compare performance statistics to normal and expected behavior.

Reveal unusual activity quickly and easily.

Multiple platform coverage

Monitor a variety of heterogeneous platforms from a single display.

Scale from one to hundreds of systems without sacrificing ease-of-use.

View application performance at a glance.

View reports from multiple systems in a single, consolidated report.

Ease of operation

Install and set up in minutes.

Avoid costly and time-consuming product training.

Identify server problems immediately upon installation.

Group systems into hierarchical folders to make it easier to watch large numbers of systems.

Observe each system or group in an intuitive single line display.

View current status at a glance with color and textual indications.

TeamQuest Alert user interface client

- HP-UX on PA-RISC
- AIX on POWER
- Red Hat Enterprise Linux on x86 and x64
- Solaris on SPARC, x86 and x64
- SuSE Linux Enterprise Server on x86 and x64
- Windows on x86, x64, and Vista

TeamQuest Manager (serves the user interface)

- AIX on POWER
- HP-UX on Itanium and PA-RISC
- Red Hat Ent. Linux on POWER, x86, x64, Itanium, zSeries
- Solaris on SPARC, x86, and x64
- SuSE Linux ES on POWER, x86, x64, Itanium, zSeries
- Windows on x86, x64, and Itanium
- ESX Server on x86 and x64

Systems, components, and applications to be analyzed

- Operating systems: AIX, HP-UX, Solaris, Linux, Windows, i5/OS and z/OS*
- Virtual environments: POWER Hypervisor, Solaris Zones, VMware, z/OS*
- Databases: DB2, Oracle, SQL Server, and Sybase*
- Application servers: WebLogic and WebSphere*
- Web servers: Apache, IIS, and others*
- Network devices (routers, switches, etc.) via SNMP*
- Network traffic between tiers
- EMC Symmetrix
- SAP R/3*
- And more

* Capability included at no additional charge.

See the TeamQuest Manager datasheet for additional details regarding systems, components, and applications to be analyzed.

Corporate Offices and Americas

+1 641 357-2700

+1 800 551-8326

+1 641 357-2778 (fax)

info@teamquest.com

Europe, Middle East and Africa

+46 31 80 95 00

+46 31 80 65 50 (fax)

+44 (0) 1865 338031 (local U.K.)

emea@teamquest.com

Asia Pacific

+61 3 9641 2288

asiapacific@teamquest.com

Check with your TeamQuest representative for the latest information regarding supported platforms and versions.



Copyright © 2007 TeamQuest Corporation. All Rights Reserved. TeamQuest and the TeamQuest logo are registered in the US, EU and elsewhere. All other trademarks and service marks are the property of their respective owners.